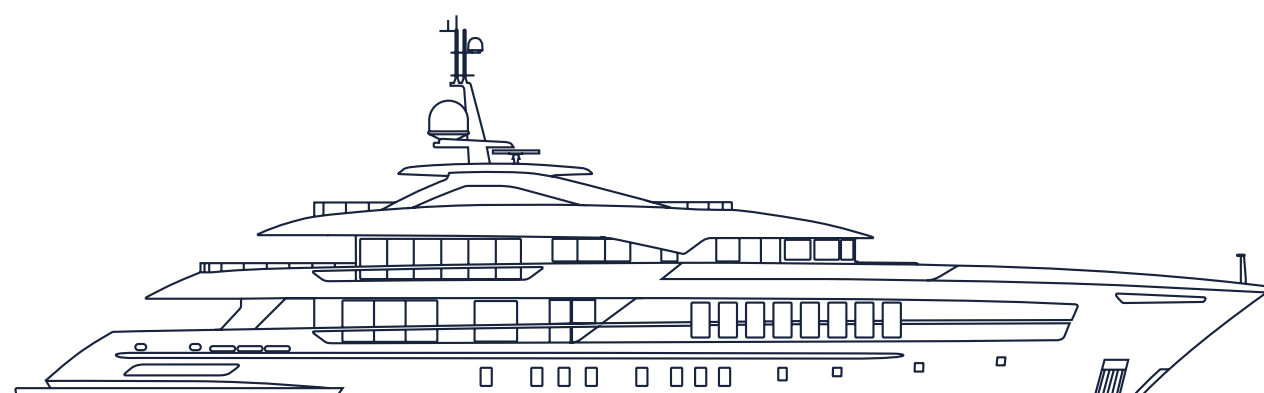




55m Steel

FDHF

19255 Moskito



03 EXTERIOR DESIGN

Whether a proven platform or a full-custom project, our visionary exteriors guarantee excellent seakeeping with onboard comfort, Dutch engineering and the latest design trends



13 INTERIOR DESIGN

Every Heesen yacht interior tells a different story, imagined by the world's foremost superyacht designers and personalised by our family of Heesen superyacht owners.



29 SPECIFICATIONS & GA

We provide all the details you need to find the right yacht for you, from hull type and interior dimensions to fuel capacity, top speed and preferred number of guest cabins.



37 HEESEN

Located in Oss in the Netherlands, Heesen is one of the most advanced yacht-building facilities in the world and a leader in the field of complex aluminium yacht construction.



57 CONTACTS

Get in touch today to learn how you could begin your Heesen journey and become the next member of our valued yachting family – we would love to hear from you.



Exterior design

A snapshot of Moskito

Exterior architecture from Frank Laupman's Omega design studio lends Moskito an air of calm authority.

Built to cross oceans, with elegant, rational forms that express power and seaworthiness. Not a single superfluous detail mars the poise of her profile.





Precision and performance

55 metres. Steel construction. Fast-displacement hull form - a patented design from the Van Oossanen studio, honed to perfection by Heesen's naval architects.

As the latest launch in the shipyard's 55m Steel class, Moskito has a high cruising speed, long range and excellent hydrodynamic efficiency.

Outdoor deck space

Sheltered from the elements by the generous cantilever of the wheelhouse deck overhead, linked to the deck saloon by simple sliding doors, Moskito's aft terrace provides 44 square metres of alfresco comfort - ideal for a long sundowner after an energetic day on the water.





Wheelhouse deck aft terrace

The wheelhouse deck is home to a secluded private lounge, and an exclusive VIP suite. Raised over the water, and also above the curious glances of harbourside strollers, its private aft terrace is the perfect spot for relaxed entertaining, or a sit-down dinner on a balmy evening.



Sun deck

Moskito's exterior guest spaces add up to some 250 square metres. With its pool, bar, seating and sunbathing areas, her sizeable sun deck is the focus of open-air life on the yacht, at anchor or in port. It is certainly going to be the most popular spot on board.



Interior design

Free-flow living

The London studio of Bannenberg & Rowell Design accepted Heesen's commission for Moskito's interior.

"We wanted to take the breath away, without being aesthetically intimidating," says Bannenberg. "That fine line between approachability and comfort."

A dual approach - contrasting tones of eucalyptus and sycamore in the main saloon. Full-height joinery that gives way to full-height windows. Traditional craftsmanship of the parquet smoked-oak floor contrasts with a high-tech coating on the coffee table.

"We wanted to create something cool and interesting, but subtly realised."





Dining
**Soaring to
new heights**

The designers sourced artwork from British talents – flowing porcelain forms from Fenella Elms, Rose Vickers' marquetry mosaics, and intricate paper collages by Hormazd Narielwalla.

The table at the centre of the main deck can seat twelve, for occasions as relaxed or as formal as you wish - dressed up or dressed down.

"Our guiding philosophy was that the owner should be as happy hosting a black-tie dinner as lounging in their shorts," says Bannenberg.

Sky lounge
A social hub

High up on the wheelhouse deck, the sky lounge provides the necessary perspective for periods of calm and relaxation.

Adjoining the aft terrace, it has an offset bar, large pivoting TV, custom-made armchairs by Holly Hunt and a thick, luxurious rug specially made for Moskito by Oliver Treutlein. Unique bespoke elements commissioned by Bannenberg & Rowell Design add depth and refinement to an already highly customised yacht.





Owner's stateroom

Owner's stateroom
*A window onto
the ocean*

Behind that gallery of tall windows on the main deck lies the owner's apartment - an exceptionally bright space on a sunny day, spanning more than eighty-two square metres. Its clean layout is characterised by the subtle curvature of the

bulkheads. Bespoke furnishings include a desk commissioned from GMS joinery in London. Oak parquet and eucalyptus veneers add continuity to the main deck colour palette, intended by Moskito's designer to be soft, easy going and light in tone.

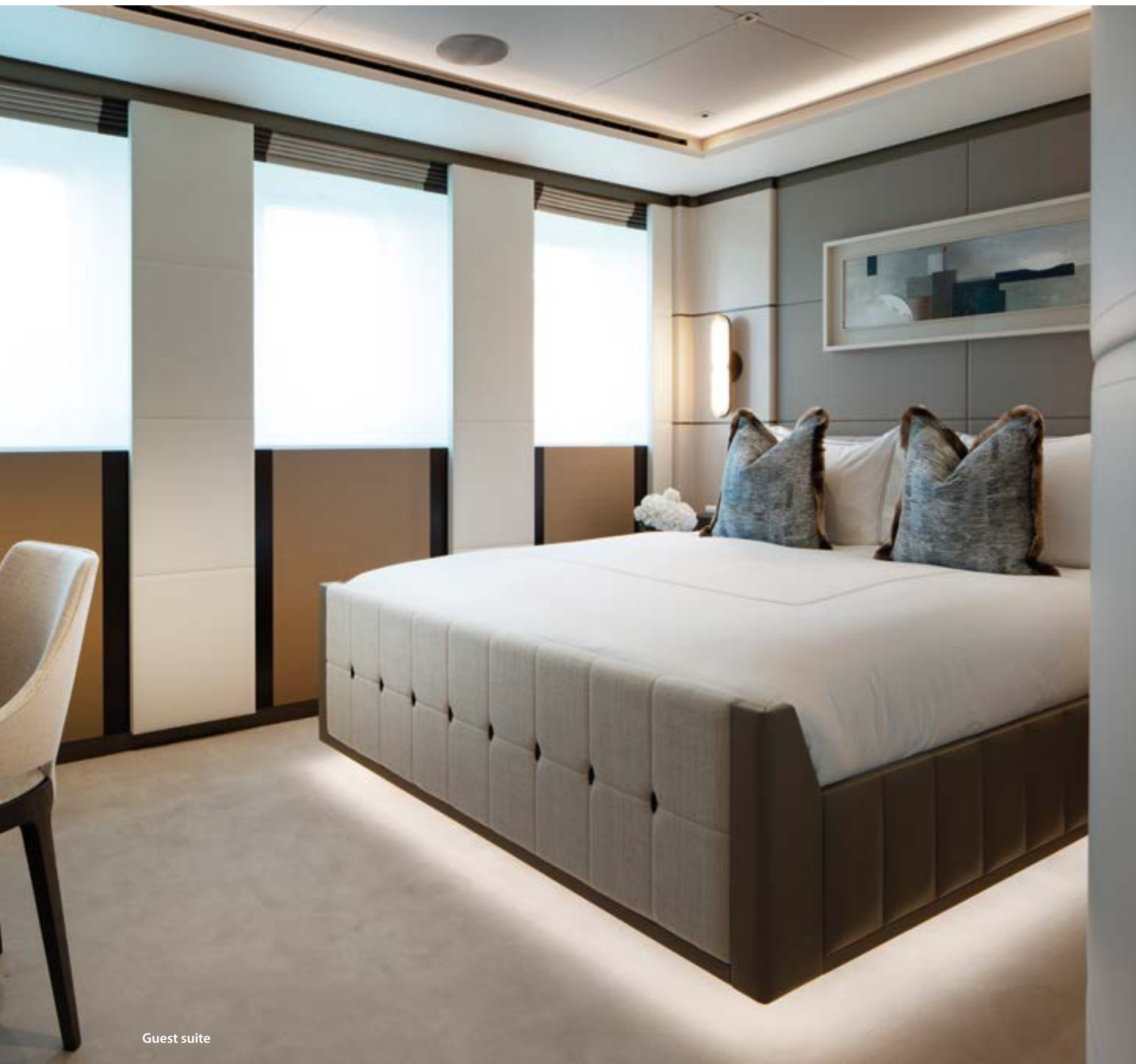


Owner's bathroom

Owner's bathroom
the calmest environment
on board

Flanked on each side by a pair of spacious dressing rooms, Moskito's master bathroom is a quiet, secluded haven - the calmest environment on board.

Two types of marble are featured – pure white Thassos contrasting with the veined grey of Laurent Gris – their cool, reflective surfaces offset by the warmth of textured limestone.



Guest suite



Guest's bathroom

Lower deck

Guest suite

A spiral staircase leads from the central entrance lobby down to the guest accommodation on the lower deck. Four exceptional ensuite guest suites are provided, arranged as two doubles and two twins, each with a spacious bathroom, a wardrobe and a dressing table. Large hull windows give every guest suites and every bathroom a beautiful view.



Beach club
*A chilled,
 private world*

Moskito's beach club is perhaps the most opulent area of the entire yacht, with its sauna, seating, shower and shade. Hidden from view, down by the water, it offers every comfort imaginable in a chilled,



private world, with a life-enhancing swim in the sea just a few steps away. Teak underfoot. Textured limestone panels contrast with reeded glass to create a rich, intimate and relaxing environment.



Wheelhouse

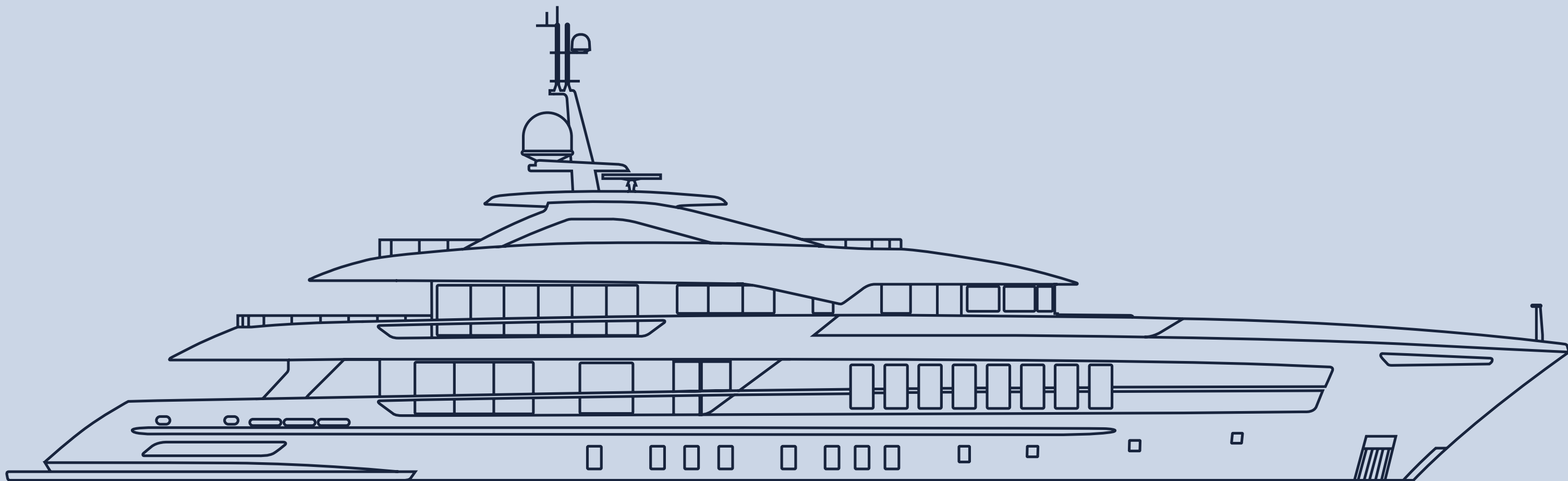
Wheelhouse
*A yacht
to go places*

Moskito is a long-range, steel-hulled yacht displacing six hundred tonnes at half load, with huge storage volumes and impressive fuel capacity. She is able to operate independently for extended periods. Two 1,000-kilowatt

MTU engines produce more than 2,680 horsepower, and provide a top speed of 15.5 knots. Cruising range at 13 knots is 4,500 nautical miles. This is a yacht that is absolutely built to go places.

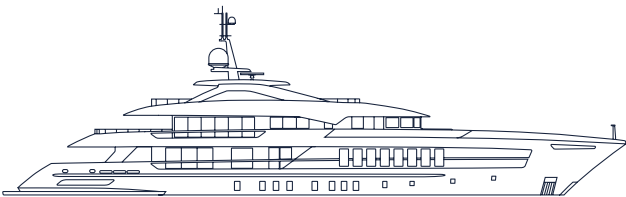
55m Steel

FDHF



Specifications

Moskito
55m Steel



General

Yard number:	19255
Hull type:	Twin propeller, FDHF
Naval architect:	Van Oossanen / Heesen Yachts
Exterior design:	Omega Architects
Interior design:	Bannenberg & Rowell Design
Classification:	Lloyd's 100A1 SSC YACHT G6 LMC, UMS Large Commercial Yacht Code (ly3)
Hull:	Steel
Superstructure:	Aluminium

Dimensions

Length over all:	55.0 metres / 180 feet 5 inches
Beam over all:	9.60 metres / 31 feet 6 inches
Draft (half load):	2.7 metres / 8 feet 10 inches
Displacement (half load):	Approx. 600 tons
Tonnage:	Approx. 760 GT

Accommodations

Crew:	13
Guests:	12
Cabins:	Full-beam owner's stateroom , one full-beam VIP suite, two double guest suites and two twin guest suites

Technical Details

Maximum speed (half load):	15.5 knots
Range at 13 knots:	4,500 Nm
Fuel capacity:	100,000 litres / 26,400 US Gallons
Fresh water:	24,000 litres / 6,340 US Gallons

Propulsion Details

Main engines:	2 x MTU 8V4000 M63
Maximum power:	2 x 1,000kW
Gearbox:	2 x ZF model 5356
Engine control:	MTU Blue Vision
Propellers:	2 x Five blade Nibral Bronze propellers
Main generators:	2 x Zenoro, 175kW, 50 Herz
Bowthruster:	Electrically driven of 125 kW make ZF-Marine
Stabilisers:	Naiad Dynamics, type 720, zero speed

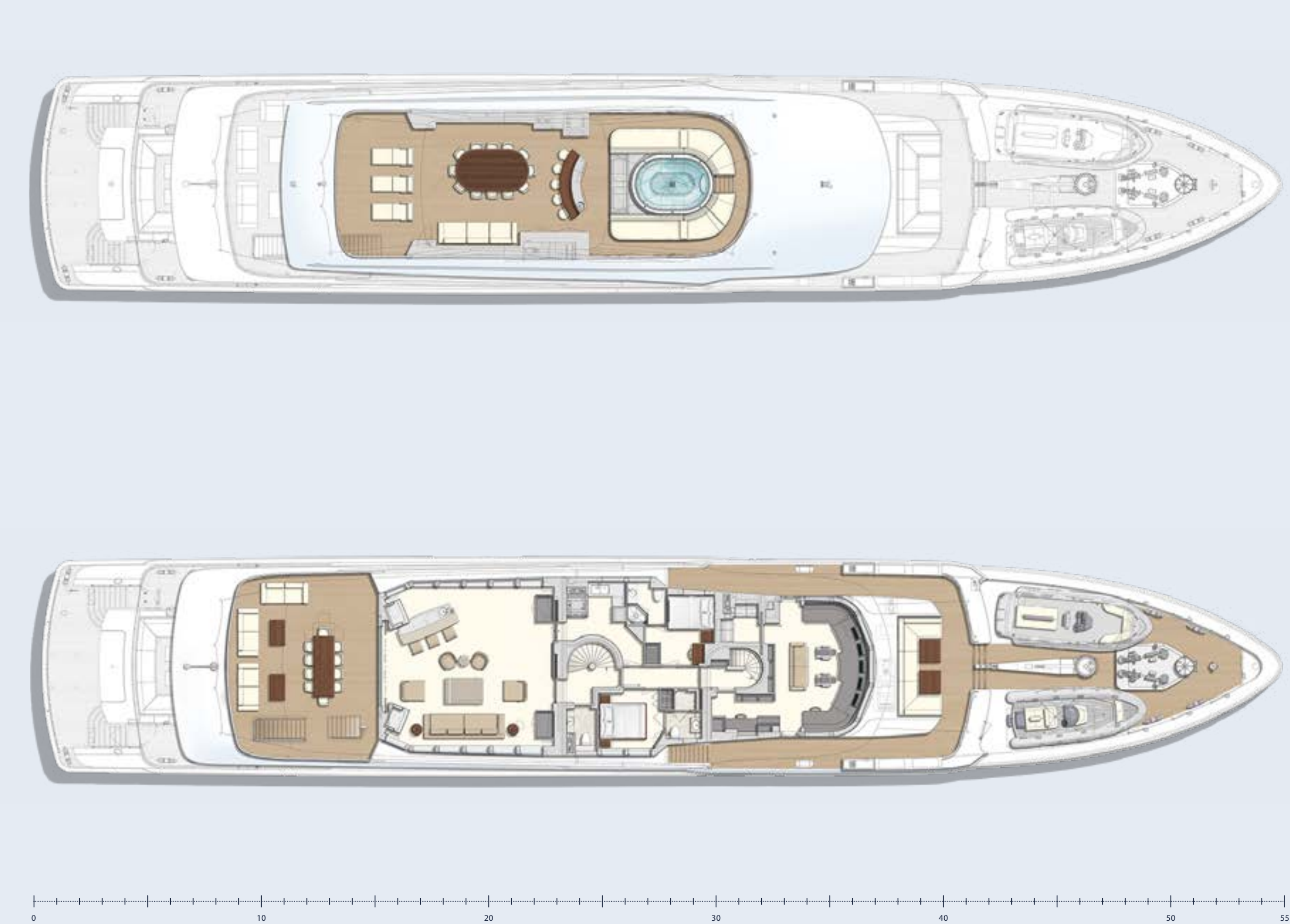


General Arrangement

55m Steel
FDHF

Sun deck

Wheelhouse deck





General Arrangement

55m Steel
FDHF

Main deck



Lower deck



At Heesen we don't just build yachts. We turn dreams into reality.

From day one, Heesen has pursued a consistent mission: to create yachts with exceptional standards of engineering and meticulous attention to detail.

To achieve this, skilled hands, driven by a passion for perfection, make all the difference. They are able to fulfil every customer's dream. Each yacht is built entirely in-house, using the strongest aluminium and the toughest steel. This craftsmanship is matched by an unparalleled hunger for innovation and

challenge. The result: designs that continue to push the limit and set the industry's benchmark. But the Heesen experience goes beyond building a perfect yacht. It's all about exceeding the client's expectations with first-class service at all times, throughout the customer journey.

A yacht is a beautiful way to travel the world in luxury and expand your horizons. At Heesen, we create yachts on which the journey is as enjoyable as the destination.



Shipyard

Ever since Frans Heesen started out in 1978, the shipyard has continuously expanded and improved its infrastructure and docks. Today, it is one of the most advanced and well-equipped yacht-building facilities in the world.

The shipyard is located in the Dutch city of Oss, 150 kilometres inland and connected to the North Sea by a series of canals and rivers. Its 22,000 square metres of covered area and

2,900 square metres of workshop space offer everything you need to construct a product as complex as a Heesen yacht. Production capacity has gradually increased with the addition of new docks. In 2016, following the success of the 65-metre Galactica Star and 70-metre Galactica Super Nova, a 90-metre shed with 85-metre dry dock were completed. These new facilities allow the construction of yachts up to 83 metres entirely in-house.



- 1. 50-metre slipway
- 2. 85-metre dry dock
- 4. 50-metre dry dock
- 5. 70-metre dry dock
- 6. Aluminium construction shed
- 7. 57-metre dry dock
- 8. 57-metre dry dock
- 9. 57-metre dry dock

- 10. Technical department / warehousing
- 11. Carpentry
- A. Offices
- B. Warehousing
- C. Crew offices
- D. Storage

Hightech craftsmanship

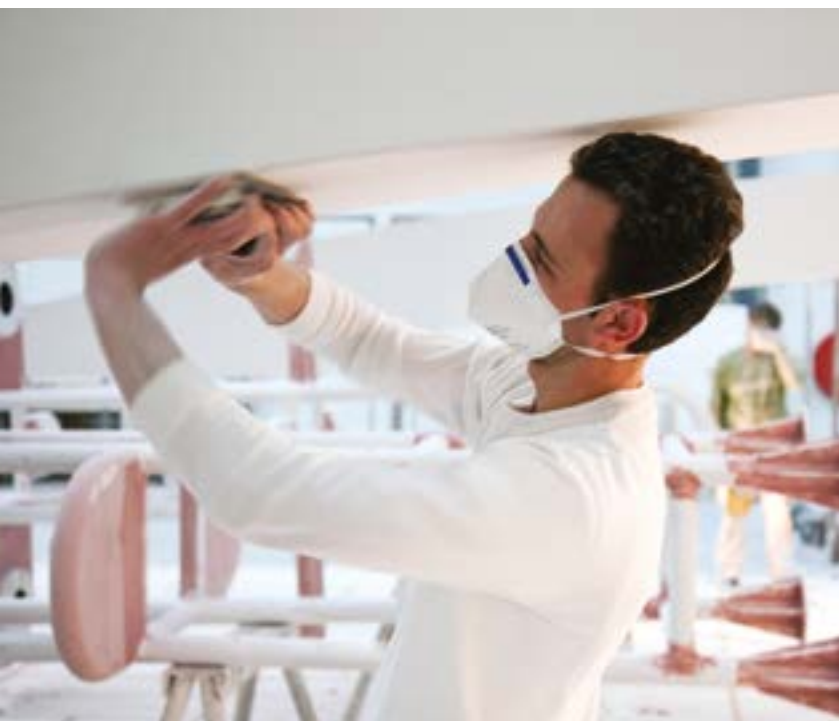
Building a yacht is one of the most challenging construction processes to be undertaken. Few processes require as many skills and expertise. What's more, in this high-tech era of robots and fully automated production, a Heesen yacht is still largely crafted by hand.



Heesen's modern shipyard in Oss builds yachts of up to 83 metres.

The design comes to life

The backbone of each Heesen yacht is expert welding to the highest tolerances. It is always a magical moment when the first contours of the hull appear, and the yacht's design comes to life. Heesen uses aluminium – which requires highly skilled and experienced welders – and steel to construct. The exterior outfitting stage is the largest unsung challenge of all builds; complex to the core, executed to perfection.



A perfect finish

Several layers of epoxy primer are applied to the aluminium and steel surfaces of the yacht, giving the hull and superstructure a smooth finish and a perfect basis for the paintwork. It takes a trained eye and skilful hands to apply each layer of coating and paint with exactly the right thickness. It's arduous work, too, which is



why Heesen equips its workers with industrial-grade exoskeletons. These fully mechanical passive suits provide protection against injury and fatigue. They alleviate the weight and physical stress of holding and working with tools in certain positions. And they also look pretty cool.



The marriage

The definitive shape of the yacht is determined by another key moment in the building process: the marriage, when the hull and superstructure are joined. It is all about perfect timing and precision when the crane operator lowers the superstructure onto the hull.

Hand-built imagination

As one of the few yacht builders to have an entire in-house department of interior specialists, Heesen guarantees consistent quality and custom design solutions that spark your imagination.

'Heesen builds its yacht interiors entirely in-house, a service that differentiates the shipyard from others in the world and enables it to guarantee the quality it promises'



Interior workshop

The shipyard's main interior workshop is situated in Winterswijk, just over an hour's drive from Oss, and provides more than 8,100 square metres of working space. Here, a large group of craftsmen work on up to five Heesen projects at the same time. This is where all of the luxury areas – such as the atrium, saloon, dining room, owner's stateroom and guest suites – are created. At the shipyard in Oss, another 30 craftsmen work on the interiors of all the service areas and sky lounges.

Rather unusually in this industry, Heesen builds its yacht interiors entirely in-house, which requires every type of machinery and skill on location. "This is something that has evolved over the years and we are very proud of it," Henry Schreur, director of Heesen Interiors, explains, "because we have been responsible for many award-winning yacht interiors." Schreur refers to the acclaimed My Sky, Galactica Star, Elena, Amore Mio and Galactica Super Nova.

This requires a lot of talent. It is one of many reasons why Heesen invests heavily in the acquisition of young talent.

Mock-up

The interior construction process consists of two phases. At first, the in-house interior department generates a four-square-metre mock-up of the proposed interior. This is a full-sized, fully finished interior fitted with handles, switches, lamps and even fabrics and flooring. If the owner agrees with the concept, the interior department then starts creating workshop drawings and sources all the materials, from the exotic to the everyday.

Exquisite materials

Once completed, the interior reaches the second phase – the actual creation process, which starts at both atelier locations. The craftsmen work with some exclusive wood types, including teak, wengé, Macassar ebony, walnut, flamed maple, as well as stained and curved glass, ray and goat skin, 3D printed elements, marble, onyx and other minerals. There are no limits to what the in-house interior specialists can create: the challenge lies in processing the materials in the right way.

Perfect finish

Naturally, raw materials such as bamboo, wood and leather differ from each other in their colour or texture. So to create uniformity, the interior specialists have to carefully treat each piece of wood by bleaching or staining, or colour the animal skin. As well as the material challenge of ensuring every piece looks exactly like its proposed design, weight, dimensions and time are other constraining factors for the craftsmen involved. However, even with last-minute changes, these professionals never take short cuts and always ensure that they install everything with a perfect finish.



Applying exclusive wood veneer



High level cabinet making



Painting with precision



Sealing the decks

Interior assembly

All of the interior components are created in the wood shops in Oss and Winterswijk and are then assembled and finished on the yacht itself, which requires many different skills for a perfect result.

After Sales & Yacht Services

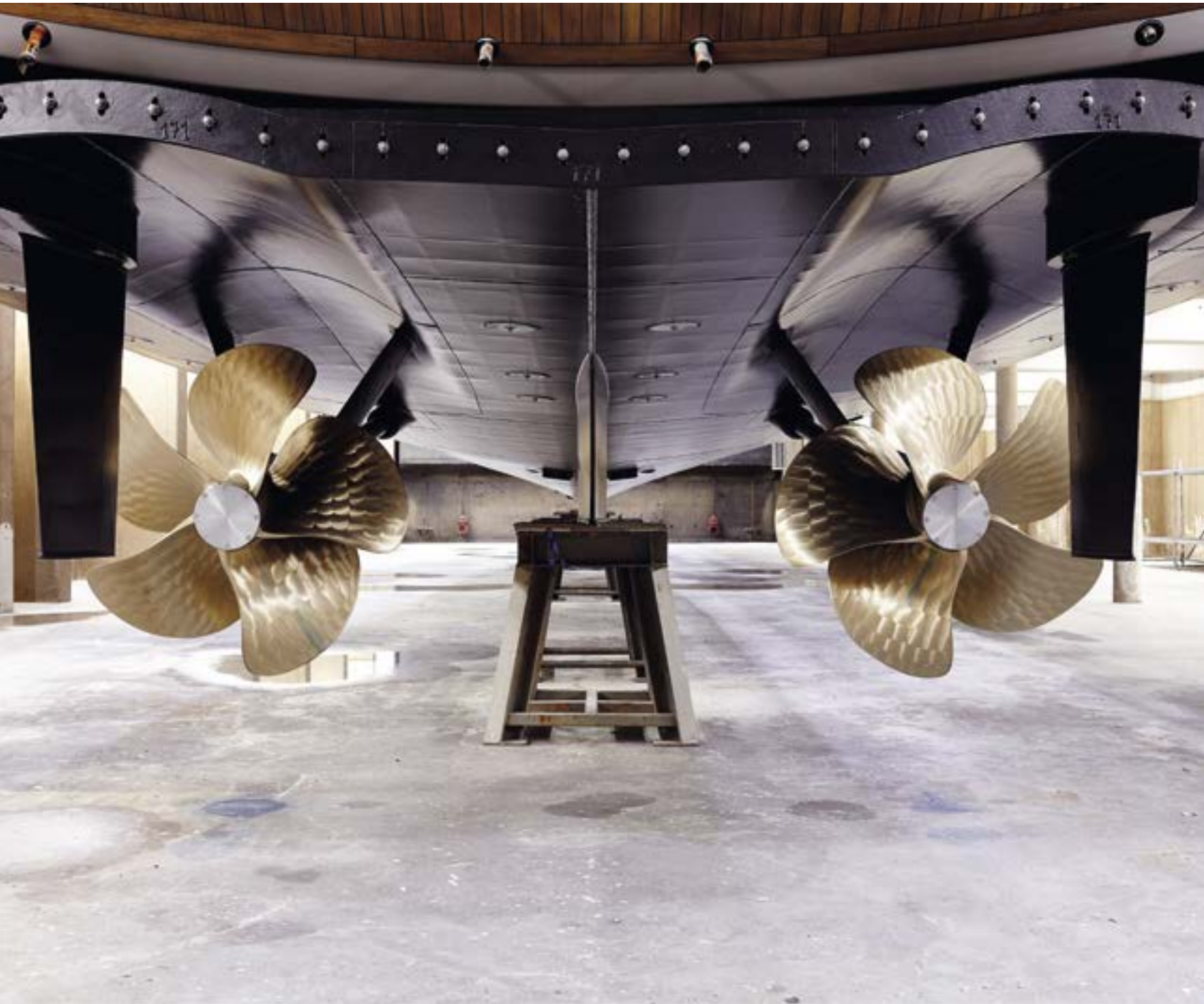
With an ever-expanding fleet of superyachts cruising the world, it was only natural to broaden the scope of services and launch a comprehensive programme called 'Yacht Services by Heesen' alongside the shipyard's existing After Sales programme. The in-house programme consists of three pillars to enhance owners' overall experience and improve the operational reliability of their assets.

Taking delivery of a Heesen yacht is the start of a journey – a carefree

journey, thanks to the support of Heesen's After Sales programme, which ensures premium care and provides maintenance and technical support throughout the yacht's entire lifespan. From the moment that our skilled team of workers finish building the yacht, she is placed in the expert caring hands of our After Sales team who keep watch over the yacht, ensuring she stays in peak condition. In addition, Heesen proactively reaches out to all owners with the yacht services detailed on the following pages.



Engine room



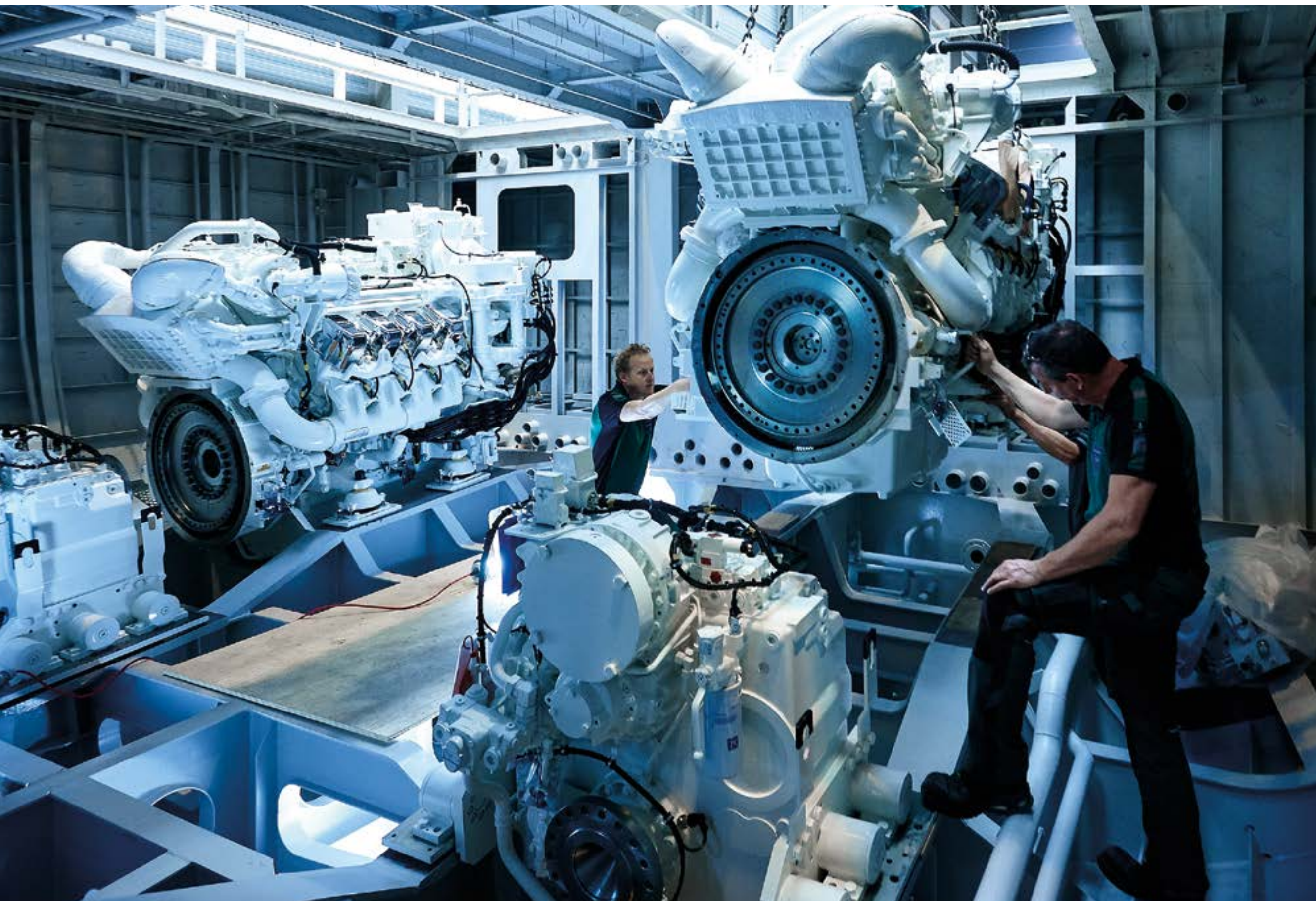
Original spare parts & provisioning

We ensure operational reliability and avoid a delayed or cancelled cruise due to technical failures by offering original components at all times. We also offer owners the complete package of recommended spare parts prior to delivery. To be able to offer this, the shipyard maintains excellent relations with all equipment suppliers, including the right partners in food, beverage, crew clothing, medical equipment, etc., to make sure that high-quality, warranty-protected and competitively priced parts arrive on time.



Refit

This pillar was introduced to ensure that Heesen's Dutch quality standards can be maintained throughout the lifecycle of a yacht. Owners sometimes have to fall back on local shipyards and subcontractors when maintenance and repair work is required. This is why Heesen provides managerial assistance on necessary refit, repair and renewal work, either from a distance or on location. A flying squad of technicians is ready to travel at a moment's notice to any location in the world.



Customer Support & Warranty

Heesen's Warranty team looks after all claims and warranty requirements, whereas Customer Support provides general 24/7 support to any Heesen client in need, even on location thanks to our flying squad. We ensure the Heesen quality-standard continues even after delivery, by offering a 5 year, 10 year or 15-year Class Survey to all of our yachts via our dedicated After Sales team.

Holland, home of yacht building

It is no coincidence that many of the best shipyards in the world are found in Holland. Our passion for yacht building and commitment to quality is unrivalled. And that is what makes Heesen Yachts the world's leading builder of high-performance yachts. We hope to see you soon to realise your dream.



Contacts

HEADQUARTERS & SHIPYARD

Rijnstraat 2
5347 KL, Oss
The Netherlands
+31 412 66 55 44

AGENT NORTH AMERICA, MEXICO, BAHAMAS & CARIBBEAN

1819 SE 17th Street, Suite 2
Fort Lauderdale, Florida 33316
USA
+1 954 533 5040

AGENT MIDDLE EAST

Indigo Icon Tower – Office 508
Jumeirah Lakes Towers
P.O. Box 29717 – Dubai, UAE
+971 4 34 34 004

AGENT SOUTH EAST ASIA

204-B, Block “K”, Mukim 12,
Batu Maung, 11960, Penang,
Malaysia
+60 462 626 28

heesenyachts.com

© Heesen Yachts 2021. This brochure has been prepared for general marketing purposes. The information contained in this brochure (including without limitation any information concerning the dimensions, capabilities and performance characteristics of the subject yacht) is given in good faith but is not warranted to be accurate. All such information is subject to change at any time without notice. Heesen Yachts gives no warranty or representation, nor shall it be liable, in contract, tort or any other way, for any claims relating to or arising from any use made of any such information.